

SEASON  
1970-71

LEICESTER  
CITY F.C.



FOOTBALL LEAGUE  
DIVISION 2.  
SATURDAY 3p.m.  
14th November

**SWINDON TOWN**

OFFICIAL PROGRAMME  
ONE SHILLING - FIVE NEW PENCE





**Drink**  
*some today*



# **ACTION ALBUM** 11. FRANK BURROWS (SWINDON)



*(Fotosports International)*

FRANK BURROWS, centre half previously with Raith Rovers and Scunthorpe United, a long-established pillar of the Town defence.



# **Leicester City Football Club Co. Ltd.**

FILBERT STREET GROUND — LEICESTER

*Manager*

F. O'FARRELL

*Chairman*

L. T. SHIPMAN, M.B.E.

*Secretary*

J. SMITH

*Directors*

T. S. BLOOR (Vice-Chairman)

J. H. BURRIDGE

W. S. G. NEEDHAM

A. E. PALLETT

D. E. SHARP

T. W. SHIPMAN

*Ticket and Match Information*

TELEPHONE : LEICESTER 58038

GENERAL OFFICE : LEICESTER 57111

## **SIGNPOST**

**b  
y**

**B  
i  
l  
l  
y**

**K  
i  
n  
g**

“NOW we can concentrate on promotion”.

How often have we heard this famous utterance? I make no apology for using it again because, until January brings the annual distraction of the F.A. Cup, it is so applicable to Leicester City, making our way towards the goal that beckons more strongly than any other — a place in the First Division.

Not that our exit from the League Cup is a matter for indifference. Having reached the last 16, we held a real stake in the younger competition, and I, for one, was keenly disappointed by the team's dismissal at Ashton Gate.

While conceding that the mid-week tournament, now contested with all the vigour and earnestness of the League itself, and with replays into the bargain, can make heavy demands on playing resources, it is a fact that any club flourishes on success, no matter what the competition may be. The League Cup has offered a fair ration of eventful football, starting with the conquest of Southampton, and has helped to sharpen the team's competitive edge.

My own forecast, confidently made, of a Leicester win at Bristol, was founded on the conviction that the team have poise and flair away from home that they find it by no means easy to reproduce before their own supporters. They would not have been flattered by victory.

Today we have the first of seven more Second Division matches in 1970. It is a series calling for as much dedication and skill as any comparable spell so far, but certainly with a hint of bigger returns than we were entitled to expect in October. And in writing this I urge the City players to treat the home games against the London trio, Orient, Millwall and Queen's Park Rangers, as though they were equally difficult, to the matches at Hull and Sheffield United which are to be settled at the beginning and end of December.

cont. on page 5



# LEICESTER DATE WITH MOSCOW DYNAMO

Most of the European nations have sent club sides to Filbert Street, and all but a very few have lost here. The only foreign victors here I can trace are Vienna Rapid who, in 1933, left with a 3—1 success.

**THE ONE COUNTRY SO FAR NOT REPRESENTED ON THE FIELD AT LEICESTER IS RUSSIA. THIS IS TO BE REMEDIED ON WEDNESDAY, NOVEMBER 18th, WHEN THE FAMOUS MOSCOW DYNAMO CLUB ARE SCHEDULED TO APPEAR AGAINST THE CITY (KICK-OFF 7.30).**

In a tour of Western Europe, Dynamo — ten times national champions — are visiting France, Switzerland, Britain and Germany. They have a fixture in Scotland, but the match here is their only one in England, and we look forward to the surprise opportunity of seeing these players for the first time in the flesh.

In the party named for the tour is the man whose name has long been universally known in sport — goalkeeper Lev Yashin. The lithe figure of this great athlete has graced our television screens several times, and we have marvelled how he retains his magnetism at an age when all other current performers have long since packed their boots. Yes, at 41 he still has a big following in the Soviet Union, though Dynamo, naturally, have groomed another younger star for the tough job of succeeding him. He is Wladimir Pilguy, a 22-year-old who is already winning the sobriquet of "the new Yashin".

A player some of us will be particularly keen to watch in brilliant action is the winger (wait for it) Gennadi Evriuzhikhin, a World Cup participant in Mexico. This holder of 20 international caps is rated the fastest footballer in the Soviet Union.

This handsome bonus is added to the Leicester programme after our dismissal from the League Cup, the next round of which is due on the same night — **WEDNESDAY, NOVEMBER 18th, your date with the Russian stars.**

## SIGNPOST (continued)

### Watford Blot Wiped Out

The stigma of that farcical defeat at Watford last season was cleared at the Vicarage Road ground a week ago, even though it was by a goal from the penalty spot.

The penalties awarded to the City this season can be taken as a measure of the greater striking power, for in most instances the spot kicks have sprung from situations in which Leicester men have been expected to score.

This latest win was our fourth away from home, a branch of activity in which we have still to catch up with Cardiff City and Hull City, each with five.

The win at Watford was timely indeed, for two of the liveliest contenders, Cardiff and Luton, were also on the victory trail at opposing grounds.

The leadership of Division Two was shared in October by ourselves and Oxford United — clubs with utterly different backgrounds. United left the Southern League to become Fourth Division members in 1962/63, staying three seasons in that section. Now, here they are, incredibly pursuing a place in Division One. I wonder what the picture will be when Oxford come here on March 27th. Can they stand the pace? A question indeed that may well be put to all the first six in the table at the moment.

The advance of Oxford, Hull and Luton is a sign of the changed times in our League competition.

### MANAGER OF THE MONTH

October winner of the Second Division Manager of the Month award by Bell's Whisky is Frank O'Farrell of Leicester City, to whom we extend our congratulations. The award will probably be presented at our match against Moscow Dynamo on Wednesday, November 18th.



# SWINDON TOWN

## Testing Journey To High Places

WHEN SOMEONE MENTIONS SWINDON TOWN, WHAT IS OUR FIRST THOUGHT? IF WE ARE SUFFICIENTLY LONG IN THE TOOTH IT COULD BE OF THAT LEGENDARY CHARACTER, INSIDE FORWARD HAROLD FLEMING, SWINDON'S MOST CELEBRATED PLAYER, WHO SERVED ENGLAND FROM 1909 TO 1914.

For the younger element, however, it is more likely that the Wiltshire club will be called to mind as the thunder-stealers of 1968-69, who shattered Arsenal 3-1 in the final of the League Cup.

Founded in 1881 by Rev. W. Pitt, the Town engaged professionals three years later and became members of the Southern League from its inception in 1894 to 1920, when the League was converted into Division Three (South) of the Football League.

## Wage Bill Of £10 A Week

Swindon's first full-time pro. staff cost £10 in wages, and the early years of the century were bedevilled with anxiety over finance. In 1907-08 the Town first entered the F.A. Cup, reaching the third round, and three years later lost to the eventual winners, Newcastle, in a semi-final. Two years afterwards they were again semi-finalists, losing to Barnsley in a replay.

League life has not been all roses for them, three seasons ending with the need for seeking re-election. Promotion to Division Two came in 1962-63, and Swindon began with an undefeated run of nine matches, but they fell back to the Third Division after two seasons. Once more they went up, in 1968-69.

In 1896 the club moved from the Croft to the County Ground, where the biggest crowd was 28,898 for the League clash with Watford in March, 1969.

In recent years Town products who have captured the headlines include Billy Lucas of Wales, Norman Uprichard (Ireland), Mike Summerbee (England) and Ernie Hunt, an Under-23 player for this country.

Currently spotlighted in the side are the Welsh international back, Rod Thomas, and that ebullient raider, Don Rogers, who holds an Under-23 cap for England.

Pen portraits of the Swindon staff:

**PETER DOWNSBOROUGH** (goal-keeper). Born Halifax. Signed in August 1965 from Halifax Town where he was a product of local football. Height 5ft 10½in. Weight 13st 2lb.

**ROY JONES** (goalkeeper). Born Clacton-on-Sea. Signed in October 1967 after his release from the R.A.F. 5ft 11in. 11st 12lb.

**OWEN DAWSON** (right-back). Born Hatfield. Joined the club from Ports-mouth in June 1962. He was a regular first team player until he was unlucky to lose his place through injury. A former youth international. 5ft 9½in. 11st 12lb.

**ROD THOMAS** (full-back). Born Glyncoirwg. A former youth player with the club, he was signed from Gloucester City in July, 1964. Has gained Welsh Under-23 and full Welsh caps. 6ft. 12st 10lb.

**JOE BUTLER** (full-back). Born Newcastle. Joined Swindon from Newcastle United in August 1965 where he graduated to the senior ranks through the junior team. 5ft 7½in. 11st.

**JOHN TROLLOPE** (left-back). Born Swindon. Joined the Swindon ground staff from school and was selected for the first team at the beginning of the 1960-61 season when he was 16 years old, and was ever present during that season. He and his partner that year, who was also 16, were the youngest full backs ever to appear as a pair in League football. 5ft 10in. 11st 13lb.

**ROGER SMART** (right half or inside forward). Born Swindon. Another local player who joined the club direct from Swindon Schoolboys. He excels as a deep lying inside forward. A versatile player who is able to play at wing half. 5ft 11½in. 12st 11lb.

**FRANK BURROWS** (centre-half). Born Larkhall, Scotland. Joined the club from Scunthorpe United for whom he played three seasons. Formerly with Raith Rovers. 6ft 1in. 12st 8lb.

**STAN HARLAND** (left half and captain). Born Liverpool. Signed from Carlisle United in July, 1966. Formerly with Everton and Bradford City. Has been a regular choice at left-half since making his debut at the beginning of the 1966-67 season. 6ft. 12st 5lb.



**They gained Wiltshire a place in the sun**





# Filbert Street Who's Who



## Len Glover



The latest subject in our Who's Who series is Londoner Len Glover who joined us from Charlton three years ago. The drawing is by Donald Green

HOME	<i>EVINGTON</i>
BORN	<i>KENNINGTON, LONDON</i>
JOINED CLUB	<i>NOVEMBER, 1967</i>
WIFE'S NAME	<i>CAROL</i>
FAVOURITE FOOD	<i>STEAK</i>
MAKE OF CAR	<i>ROVER</i>
MOST ADMIRERD PLAYER	<i>Di STEFANO</i>
BEST-LIKED OPPOSING GROUND	<i>ANFIELD, WHITE HART LANE</i>
WHAT OTHER CAREER WOULD YOU HAVE CHOSEN	<i>PROFESSIONAL TENNIS (if good enough)</i>
SUPERSTITIONS	<i>NO IMPORTANT ONES</i>
FAVOURITE ENTERTAINMENT	<i>THEATRE, CINEMA</i>
OTHER SPORTING INTERESTS	<i>TENNIS</i>

**AUTOGRAPH . . .**





# Old problems which have been resolved

I SHALL never forget the first time I had occasion to telephone Leicester City, Filbert Street was a new "home" ground for me, after I had moved to the old Daily Herald.

My office had forgotten to arrange a Press ticket for a City game against Spurs, so on the way to the ground I had to stop off and ring in to request that a ticket be left for me on the Press door.

The voice at the other end was chillingly brusque. "You journalists . . ." it growled.

"You can solve the Suez situation and the National Debt, but you don't know how to write for a Press ticket!"

## Open Suspicion

The attitude, which as a new boy on a national paper, made me wonder what I had let myself in for, was not really untypical of the uneasy relationship which seemed to exist between newspapers and football clubs at that time.

It was a case of open suspicion on both sides. Sometimes it was nothing short of a miracle that the news got into the paper at all. As always, there were faults on both sides.

Since then, mercifully, the situation has undergone a complete change, with journalists and club officials understanding each other's problems far better.

The result is that while the Midland area is still not producing the level of achievement on the field that it should, the publicity and public relations side has undergone a revolution in the last decade.

## P.R. Awareness

Few clubs can complain about the degree of exposure they get in local and national papers, in magazines and other publications, and on radio and TV.

For this the public, who are rarely kept in the dark about their club's activities for very long, can thank public relations-conscious officials like the Leicester partnership of manager Frank O'Farrell and secretary John Smith and their counterparts elsewhere.

In former Filbert Street secretary, Eddie Plumley and manager Noel Cantwell, Coventry City have officials who always have their supporters very much in mind and the same can be said of virtually every Midland club.

Another ex-Filbert Street official, manager Matt Gillies, now at Forest, has an increasingly good relationship with reporters, while Derby's Brian Clough is something of a pin-up boy of the Midland Press tribe.

## Always Hungry For More

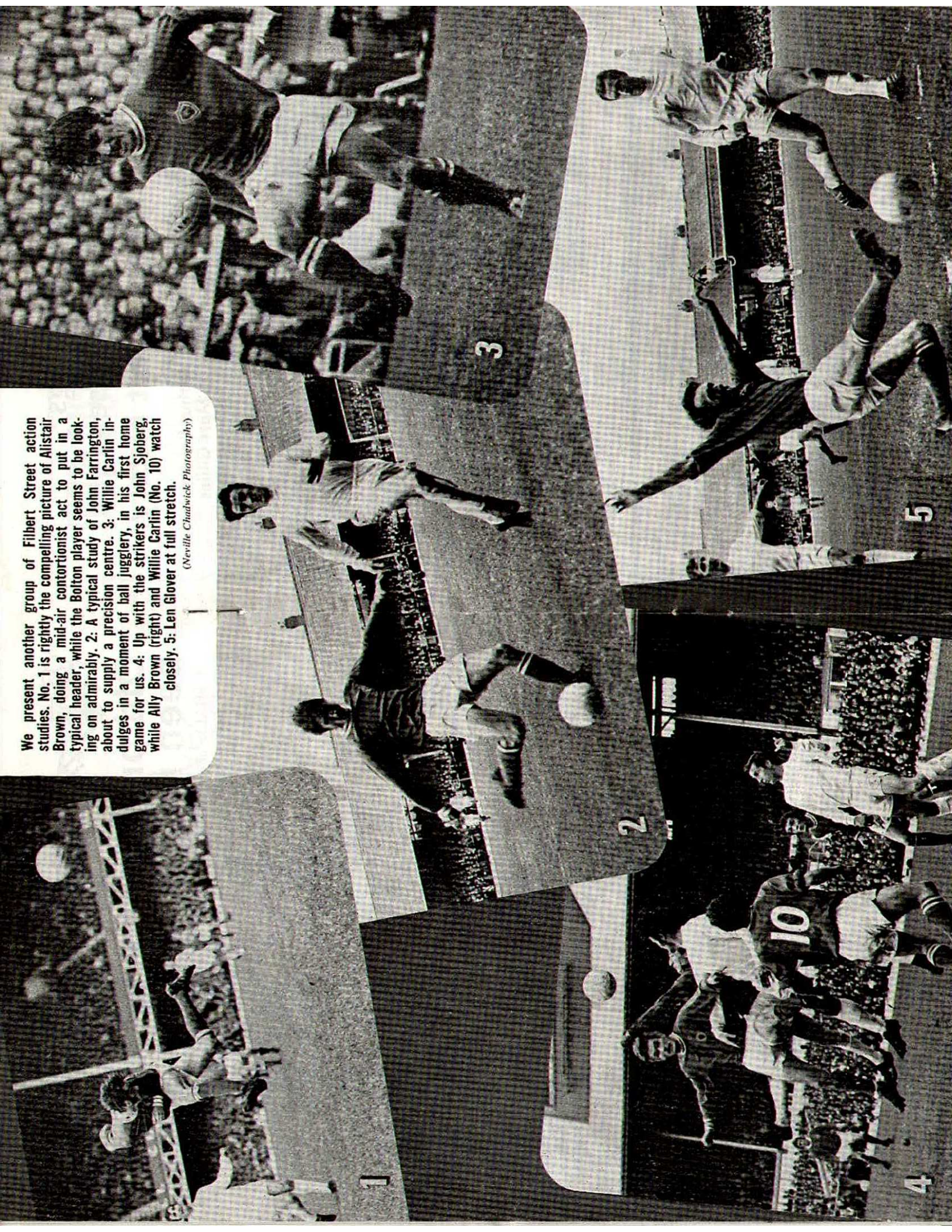
No journalist, I suppose, could ever be completely satisfied with his flow of news. Whatever we get we want more, but when a club official spares a few moments and does his best to answer questions constructively, we will go away reasonably contented.

At least, in the Midlands, we do not have to deal with a hush-hush character like a well-known manager in the north who, in answer to one loaded question from a reporter, dropped his voice and confided in all seriousness: "Off the record . . . no comment".



We present another group of Filbert Street action studies. No. 1 is rightly the compelling picture of Alistair Brown, doing a mid-air contortionist act to put in a typical header, while the Bolton player seems to be looking on admirably. 2: A typical study of John Farrington, about to supply a precision centre. 3: Willie Carlin indulges in a moment of ball jugglery, in his first home game for us. 4: Up with the strikers is John Sjoberg, while Ally Brown (right) and Willie Carlin (No. 10) watch closely. 5: Len Glover at full stretch.

(Neville Chadwick Photography)



1

2

3

4

5



# Manager whose signings changed the course of Filbert Street history

NORMAN BULLOCK, the last English manager of Leicester City, died recently. The condolences of all associated with the club have been passed to his wife and family.



*(Photo by courtesy of Leicester Mercury)*

**A man of spirit, Norman brought a refreshing bluntness and open-heartedness from his native Lancashire to Leicester in November, 1949, when he filled the vacancy left by the departure of Johnny Duncan, staying until his resignation on February 8th, 1955.**

He came with an enviable reputation as a player with Bury, first as a hard hitting centre forward who was honoured by England, against Wales in 1926 and Ireland a year later. When his dashing days as a goal-hungry leader of the Bury attack were over, he directed his immense energy and enthusiasm to other duties — at centre-half where he served his beloved Bury with equal zeal and success, writes Billy King.

## Arthur Rowley And Matt Gillies

Norman Bullock made two signings of far-reaching importance to this club. The first was the acquisition on June 30th, 1950, of a young marksman from Fulham who was to write an exciting chapter in our history and that of English football generally — George Arthur Rowley, at a £12,500 fee, which was soon to prove the best bargain struck by any City chief. Rowley's fearsome left foot — with the right by no means idle — smashed club records, and eventually he became England's champion, with a final aggregate of 434 goals, 251 of which were bagged on League service with Leicester.

January 23rd, 1952 was the next day of decision that had major repercussions. Norman persuaded a Scottish centre-half Matthew Gillies, to part with Bolton Wanderers, then certainly not aware of the step that had been taken. Matt graduated through the jobs of captain and coach to the manager's chair, from which he steered the club through the highly eventful sixties, with two Cup Finals.

## Three Notable Signings

Norman Bullock's influence on the City story would have been considerable enough for the fact that he signed three who were to captain the club with distinction: Gillies, Colin Appleton and Jack Froggatt, the one time idol of Portsmouth, whose move to Filbert Street on May 1st, 1954, supplied so much grist to the mill for the sports-writers of the time.

Still with the club is a man introduced to the club by Mr Bullock — David Jones, who came as head trainer to re-join his old boss from Bury, in June, 1950, and in 1953-54 the pair restored Leicester to the First Division.

His other passion was golf, which he played to a handicap low enough to command many rewards and much respect on courses in many parts of the country.



# FORD DISPLAY COMPETITION

The Ford Motor Co., sponsors of the Ford Sporting League which has stimulated a new interest for us this season, have come forward with another generous offer.

They have invited League clubs to take part in a display competition for the latest Cortina model, the winners of which will be presented with one of these handsome cars, while second and third clubs will receive models of the Escort. This competition is being handled locally by Central Motors of Belgrave Gate.

Our part in the competition was scheduled for the home games with Bolton and Swindon Town, here this afternoon. You will have already seen the Cortina, on display at the main stand — Filbert Street corner of the ground and another model in the Ford range outside the double-decker end.

Ford girls will be distributing gift key rings from the track before today's kick-off, while everyone is being given a car sticker publicising Leicester City.

We are able to announce a further gesture by Central Motors, who have arranged to present to the club a Cortina as a special award if we win promotion this season.

## SOUND OFF

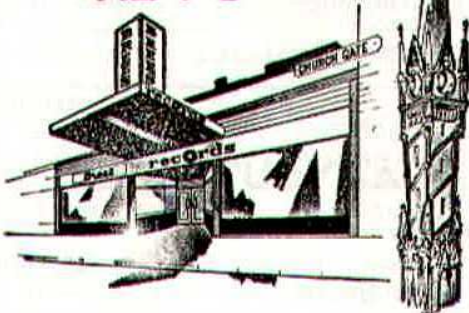
**“Sound Off” gives you Music, News and Scores**

SOUND OFF, Filbert Street's own broadcasting service, has become one of the established features of match days, with a varied and comprehensive service that the fans look forward to. Record requests, which must be sent in good time to Richard Thompson, Sound Off,

Leicester City F.C., have become highly popular, and we urge you to stay after the game and hear all the results from other grounds.

All discs played on Sound Off are obtainable from Brees Records, Churchgate, Leicester and Chestnut Avenue, Oadby.

**Brees  
RECORDS**



CONTINENTAL ☆ UNDERGROUND  
CLASSICAL ☆ JAZZ ☆ POPULAR

**Your City Centre and  
Oadby Record Specialists**

2 Churchgate  
Leicester  
Tel: 24949

46 Chestnut Ave  
Oadby  
Tel: 2116

(One Hour Parking on Saturday)



# RESULTS · GOALSCORERS · CROWDS

## LEAGUE DIVISION TWO

1970

### August

			Scorers	Attendance
15	Cardiff City	Home	0—1	27,578
22	Queen's Park Rangers	Away	3—1	Kellard, Brown (A), Farrington 17,090
29	Carlisle United	Home	2—2	Nish, Glover 20,809

### September

2	Bristol City	Home	4—0	Farrington, Kellard, Brown (A), Nish (pen.) 20,228
5	Oxford United	Away	0—1	12,895
12	Luton Town	Home	1—0	Brown (A) 24,246
19	Charlton Athletic	Away	1—0	Partridge 10,940
26	Portsmouth	Home	2—0	Glover, Farrington 25,613
30	Middlesbrough	Home	3—2	Brown (A) 2, Kellard 26,279

### October

3	Blackburn Rovers	Away	2—2	Partridge, Nish (pen.) 9,061
10	Sunderland	Home	1—0	Glover 26,580
14	Under-23 International		3—1	Royle, Robson, Kidd 24,757

### England v West Germany

17	Cardiff City	Away	2—2	Farrington, Sjoberg 26,008
20	Birmingham City	Away	0—0	25,381
24	Sheffield Wednesday	Away	3—0	Brown (A), Nish 2 (1 pen.) 23,160
31	Bolton Wanderers	Home	1—0	Kellard 24,485

### November

7	Watford	Away	1—0	Nish (pen.) 17,107
14	Swindon Town	Home		
21	Norwich City (1)	Away		
28	Orient	Home		

### December

5	Hull City	Away		
12	Millwall (2)	Home		
19	Queen's Park Rangers	Home		
26	Sheffield United	Away		

1971

### January

9	Middlesbrough	Away		
16	Birmingham City	Home		
30	Orient	Away		

### February

6	Hull City	Home		
13	Millwall (5)	Away		
20	Norwich City	Home		
27	Bolton Wanderers	Away		

### March

6	Sheffield Wednesday (6)	Home		
13	Swindon Town	Away		
20	Watford	Home		
27	Oxford United (S.F.)	Home		

### April

3	Carlisle United	Away		
10	Sheffield United	Home		
12	Luton Town	Away		
13	Blackburn Rovers	Home		
17	Sunderland	Away		
24	Charlton Athletic	Home		
27	Bristol City	Away		

### May

1	Portsmouth	Away		
---	------------	------	--	--

© The Football League Limited 1970

Scorers

Attendance

## MIDLAND YOUTH LEAGUE

### September

7	Oxford United	Home	4—0
23	Coventry City	Away	0—3
28	Northampton Town	Home	4—0

### October

7	Wolves	Away	0—1
12	Birmingham City	Home	0—2
19	Notts County	Away	3—0
26	Nottingham F.	Home	3—3

### November

2	Peterborough	Home	1—2
---	--------------	------	-----

## F.A. YOUTH CUP

### November

4	Rothwell Town	Home	3—2
---	---------------	------	-----

(First Round)



## FOOTBALL LEAGUE DIVISION TWO

	P	HOME					A	Pt	AWAY					Pt
		W	D	L	F	A			W	D	L	F	A	
LEICESTER CITY	16	6	1	1	14	5	4	3	1	12	6	24		
LUTON TOWN	16	6	1	1	17	2	3	3	2	12	8	22		
CARDIFF CITY	16	3	4	1	17	11	5	2	1	8	3	22		
SHEFFIELD UNITED	16	3	4	0	16	12	4	3	2	14	9	21		
HULL CITY	16	5	1	2	9	4	4	2	2	11	12	21		
OXFORD UNITED	16	3	2	2	10	10	5	2	2	14	9	20		
NORWICH CITY	16	5	2	1	11	6	2	3	3	7	8	19		
CARLISLE UNITED	16	6	2	1	14	7	0	5	2	7	11	19		
SUNDERLAND	16	6	1	2	18	9	1	2	4	5	9	17		
MIDDLESBROUGH	16	4	2	1	15	10	2	2	5	8	13	16		
SHEFFIELD WEDNESDAY	17	4	2	3	10	12	2	2	4	11	15	16		
SWINDON TOWN	16	6	3	0	15	4	0	0	7	4	12	15		
PORTSMOUTH	16	5	1	2	18	9	0	3	5	6	13	14		
QUEEN'S PARK RANGERS	16	4	1	3	16	10	2	1	5	10	16	14		
MILLWALL	16	3	2	2	10	4	2	2	5	8	15	14		
WATFORD	16	3	2	3	7	6	1	4	3	11	19	14		
BOLTON WANDERERS	17	4	1	4	13	11	1	2	5	6	15	13		
ORIENT	16	2	5	1	5	3	1	2	5	6	19	13		
BIRMINGHAM CITY	16	2	4	2	7	7	2	0	6	9	14	12		
BRISTOL CITY	16	3	2	2	12	14	0	2	7	6	18	10		
BLACKBURN ROVERS	16	2	3	4	8	13	0	3	4	5	13	10		
CHARLTON ATHLETIC	16	1	4	3	10	13	0	2	6	2	15	8		

## FOOTBALL LEAGUE CUP

<b>September</b>					
9	Southampton (2nd Round)	Home	3—2	Farrington, Glover, Fern	20,728
<b>October</b>					
7	Bolton W. (3rd Round)	Away	1—1	Farrington	8,623
12	Bolton W. (3rd Round Replay)	Home	1—0	Sjoberg	18,068
28	Bristol City (4th Round)	Home	2—2	Farrington, Nish (pen.)	21,577
<b>November</b>					
3	Bristol C. (4th Round Replay)	Away	1—2	Nish (pen.)	16,575
	(after extra time) 90 mins. 1—1				

### FOOTBALL COMB.

<b>August</b>			
15	Cardiff City	Away	0—1
22	West Ham United	Away	1—0
26	Birmingham City	Home	0—0
29	Arsenal	Away	2—1
<b>September</b>			
1	Bristol City	Away	2—3
5	Bournemouth	Home	1—3
12	Oxford United	Away	0—2
16	Chelsea	Home	3—0
19	Crystal Palace	Home	0—0
26	Queen's Pk. Rangers	Away	0—1
<b>October</b>			
3	Cardiff City	Home	1—0
10	Fulham	Away	2—1
17	Oxford United	Home	5—0
24	Tottenham H.	Home	0—0
<b>November</b>			
7	Swansea City	Home	1—1

### MIDLAND INTERMEDIATE LEAGUE

<b>Cup Competition, Section B</b>			
<b>August</b>			
15	Mansfield Town	Away	1—0
22	Nottingham Forest	Away	0—0
29	Coventry City	Away	1—0
<b>September</b>			
5	Derby County	Home	2—2
12	Aston Villa	Away	3—0
19	Mansfield Town	Home	3—0
26	Nottingham Forest	Home	2—1
<b>October</b>			
3	Coventry City	Home	1—1
10	Derby County	Away	3—2
17	Aston Villa	Home	0—1
<b>League Competition</b>			
24	Stoke City	Away	1—1
31	Walsall	Home	2—1
<b>November</b>			
7	West Brom. Albion	Away	1—1



# THE TRAVELLING FAN'S GUIDE

**ROAD AND RAIL GUIDE FOR THE SECOND DIVISION MATCH  
WITH NORWICH CITY ON SATURDAY, NOVEMBER 21st, 1970**

## MIDLAND RED . . .

Outward ..... Depart Humberstone Gate 8.45 a.m.

Return ..... Immediately after the match

Fare: 20/- — No half fares

### Going by Rail . . .

#### OUTWARD

Loughborough dep.

Leicester dep.

Norwich arr.

09.53 Norwich dep.

10.23 Leicester arr.

13.33 Loughborough arr.

#### RETURN

17.45

20.50

21.20

Light refreshments will be available on the train.

Carrow Road is 10 minutes walk from the station.

The return fare will be 30/- from both stations with no half fares for children.

### Going by Road . . .

LEICESTER — A47 through Uppingham and Peterborough to Wisbech

**63 MILES**

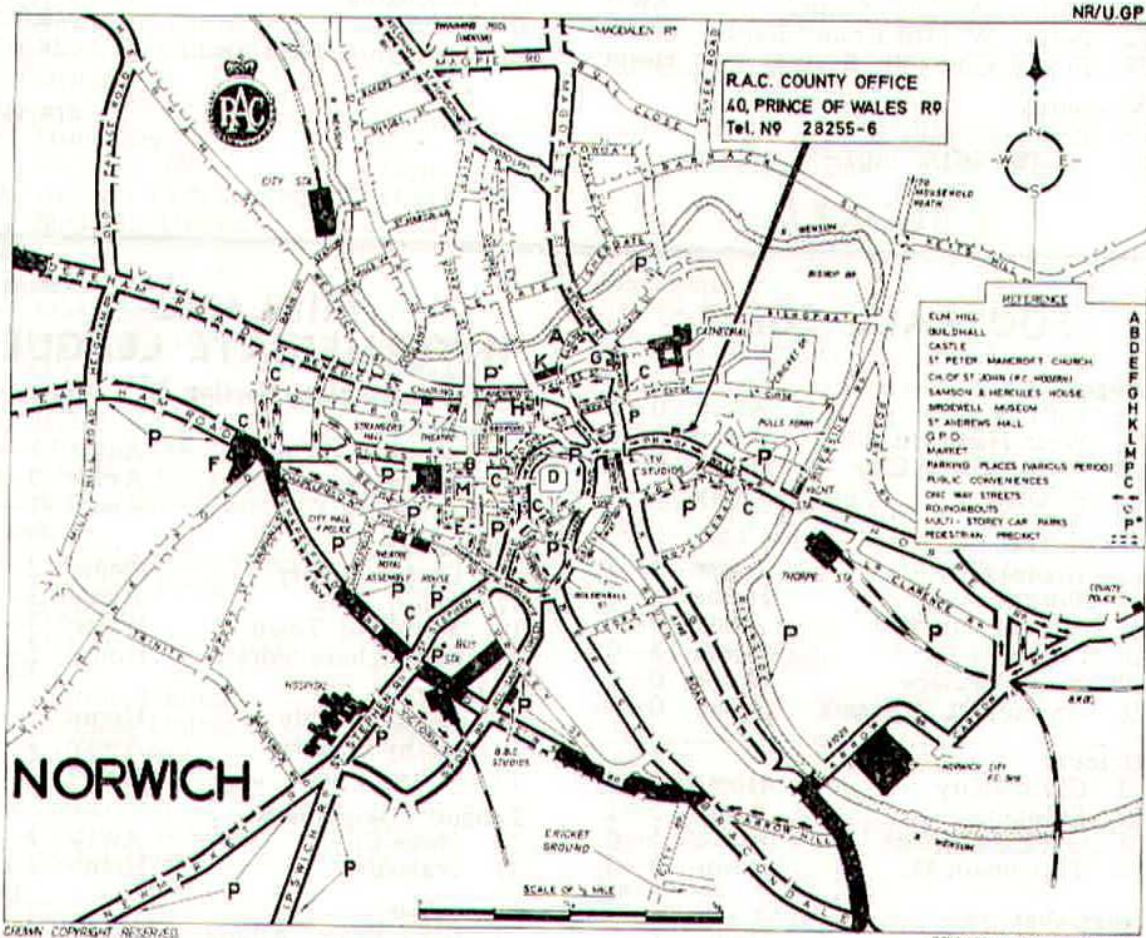
A1101 to Outwell joining the A1122 through Downham Market to Swaffham

**89 MILES**

A47 through East Dereham to Norwich entering by Dereham Road (See Plan). Turn right Heigham Road and at end turn left along Earlham Road. Continue via Chapelfield Road, Queens Road and Bracondale to King Street. Turn left along King Street then right along Carrow Road to:—

**NORWICH CITY FOOTBALL GROUND.**

**119 MILES**





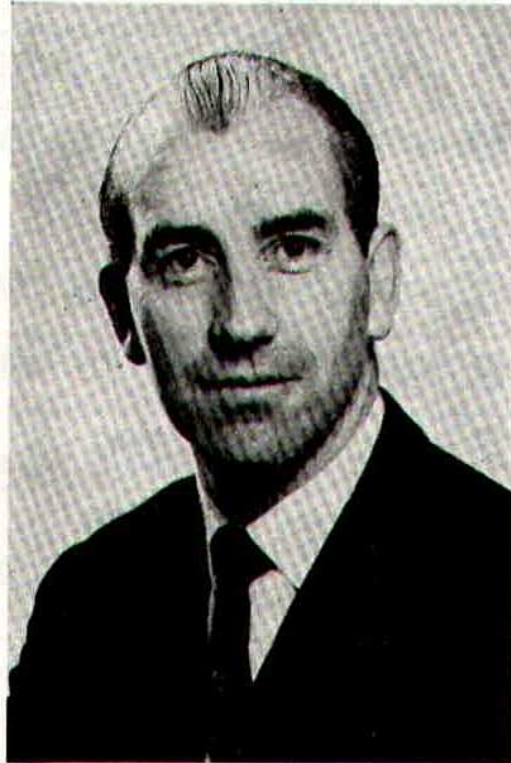


# MIDDLE MAN

## ANTHONY MORRISSEY (Cheshire)

Tony Morrissey began as a schoolboy referee, at the age of 16. He soon gained a place on the Cheshire County League list, then became attached to the Northern Premier League, which was the last step to the Football League. He has officiated in European Cup football.

Mr Morrissey is a financial controller with an American firm, and lives at Bramhall, Cheshire. His principal hobby is amateur operatics. He has one daughter.



### TODAY'S GUESTS Cont. from page 6

**DON ROGERS** (outside right or left). Born Paulton. Probably the most sought after player in the team. He was signed by Swindon when 15 and quickly came to the fore. Gained many England youth international caps and subsequently played in the England Under-23 team. 5ft 10½in. 12st 10lb.

**PETER NOBLE** (inside forward). Born Sunderland. Signed from Newcastle in January, 1968. Prefers to play an attacking role. 5ft 8in. 10st 10lb.

**JOHN SMITH** (inside forward). Born London. Signed from Torquay United in June 1968 and previously played for Leyton Orient, West Ham, Tottenham and Coventry. England Under-23 international. 5ft 8in. 13st.

**ARTHUR HORSFIELD** (inside forward). Born Newcastle. A signing from Newcastle United. Previously played for Middlesbrough whom he joined as a youth international. 5ft 11in. 12st 11lb.

## City Souvenirs on Sale Now

Official lapel badge	...	...	4/6
Pennant	...	...	3/-
Rosette	...	...	2/6
Tourist badge	...	...	2/6
Year book	...	...	4/-
College type scarf	...	...	16/-
Horizontal bar scarf	...	...	12/6
Pom-pom hat	...	...	9/-
Car sticker	...	...	2/-

### PHOTOGRAPHS

Black and white postcard size, 1/6d. each:

Peter Shilton  
David Nish  
Alistair Brown

### PROGRAMMES

Large stocks are available.



# YOUR SCORES SERVICE PAGE

<b>BLUE PLATE</b>	<b>HALF TIME</b>	<b>FULL TIME</b>
<b>A</b> LUTON TOWN v CARLISLE UNITED		
<b>B</b> CARDIFF CITY v BLACKBURN ROVERS		
<b>C</b> OXFORD UNITED v HULL CITY		
<b>D</b> SHEFFIELD UNITED v QUEEN'S PARK RANGERS		
<b>E</b> NORWICH CITY v SHEFFIELD WEDNESDAY		
<b>F</b> BRISTOL CITY v WATFORD		
<b>G</b> BIRMINGHAM CITY v ORIENT		
<b>H</b> MIDDLESBROUGH v CHARLTON ATHLETIC		
<b>J</b> PORTSMOUTH v SUNDERLAND		
<b>K</b> MILLWALL v BOLTON WANDERERS		
<b>L</b> MANCHESTER CITY v DERBY COUNTY		
<b>RED PLATE</b>		
<b>A</b> NOTTINGHAM FOREST v MANCHESTER UNITED		
<b>B</b> WEST BROMWICH ALBION v SOUTHAMPTON		
<b>C</b> LIVERPOOL v COVENTRY CITY		
<b>D</b> STOKE CITY v EVERTON		
<b>E</b> WEST HAM UNITED v WOLVERHAMPTON W.		
<b>F</b> ARSENAL v CRYSTAL PALACE		
<b>G</b> LEEDS UNITED v BLACKPOOL		
<b>H</b> CHELSEA v TOTTENHAM HOTSPUR		
<b>J</b> BURNLEY v HUDDERSFIELD TOWN		
<b>K</b> NEWCASTLE UNITED v IPSWICH TOWN		
<b>L</b> SWINDON TOWN RES. v LEICESTER CITY RES.		



# FRANK BERRY LIMITED

<b>Mobile Cranes</b>	<i>Scrap Iron, Steel and</i>
<b>for Hire, up to</b>	<i>Metal Merchants,</i>
<b>25 tons capacity</b>	<i>Dismantlers,</i>
<b>DISTANCE</b>	<i>Machinery Merchants,</i>
<b>NO OBJECT</b>	<i>Constructional and</i>
<b>Plant Installation</b>	<i>Bright Steel</i>
<b>and Removals</b>	<i>Stockholders</i>

**WESTERN BOULEVARD-LEICESTER  
and at Loughborough**

**Telephone: Leicester 57241 (7 lines)**

**LEICESTER STEEL SUPPLIES LTD**

**WENLOCK WAY (off Barkby Road) LEICESTER**

**Telephone: 68444**

**BRIGHT-DRAWN MILD, FREE-CUTTING, CASE-HARDENING, CARBON AND  
ALLOY STEEL ROUNDS, SQUARES, HEXAGONS AND FLATS IN STOCK**



# LEICESTER CITY

# SWINDON TOWN

COLOURS: Blue Shirts  
White Shorts

COLOURS: Red Shirts  
White Shorts

- SCORE
- |    |                    |  |
|----|--------------------|--|
| 1  | PETER SHILTON      |  |
| 2  | STEPHEN WHITWORTH  |  |
| 3  | DAVID NISH (Capt.) |  |
| 4  | MALCOLM MANLEY     |  |
| 5  | JOHN SJOBERG       |  |
| 6  | GRAHAM CROSS       |  |
| 7  | JOHN FARRINGTON    |  |
| 8  | WILLIE CARLIN      |  |
| 9  | ALISTAIR BROWN     |  |
| 10 | BOBBY KELLARD      |  |
| 11 | LEN GLOVER         |  |
| 12 |                    |  |

- SCORE
- |    |                      |  |
|----|----------------------|--|
| 1  | ROY JONES            |  |
| 2  | ROD THOMAS           |  |
| 3  | JOHN TROLLOPE        |  |
| 4  | JOE BUTLER           |  |
| 5  | FRANK BURROWS        |  |
| 6  | STAN HARLAND (Capt.) |  |
| 7  | JOHN SMITH           |  |
| 8  | ROGER SMART          |  |
| 9  | ARTHUR HORSFIELD     |  |
| 10 | PETER NOBLE          |  |
| 11 | DON ROGERS           |  |
| 12 |                      |  |

ANY LATE CHANGES WILL BE ANNOUNCED OVER THE PUBLIC ADDRESS SYSTEM

Referee: A. E. MORRISSEY  
(Bramhall, Cheshire)

Red Flag: J. M. WARNER (Wednesbury, Staffs.)  
Yellow Flag: G. P. OWEN (Pentraeth, Anglesey)

## Our Next Home First Team Game ORIENT

SATURDAY 28th NOVEMBER KICK OFF 3 p.m.

SEATS AVAILABLE IN ADVANCE PRICE 16/-, 12/- AND 10/-